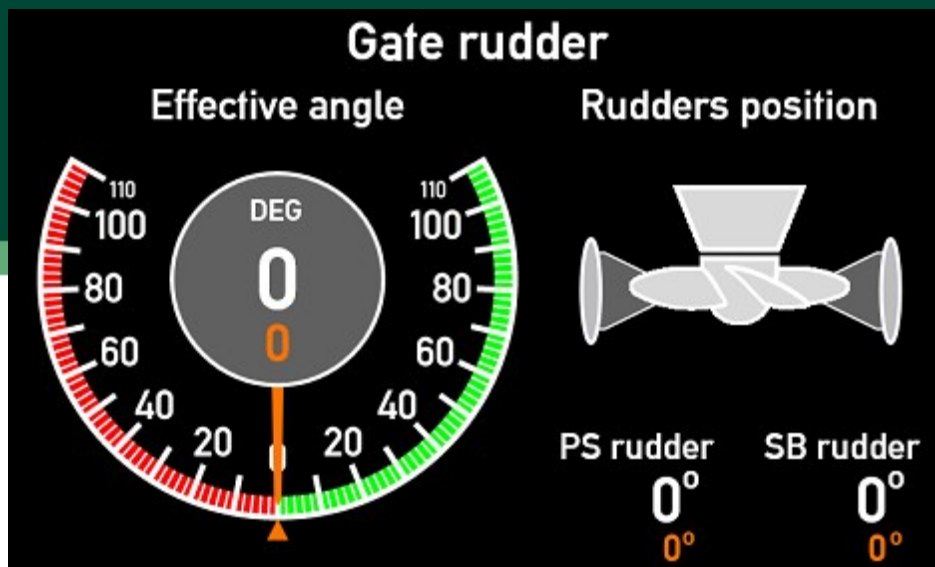




Improve
Tomorrow

XDi 144/192 Multi

Special Propulsion



Library owner: DEIF STANDARD LIB






Library number: 22

Library version: 2001

Table of Contents



1	LIBRARY INFORMATION	3
2	PRODUCT PROFILES (PP)	4
3	VIRTUAL INDICATORS (VI)	6
4	DETAILED VIRTUAL INDICATOR (VI) DESCRIPTION	7

Library description :	
Selection of special propulsion indicators	
Library status symbols :	
	Released & Locked
	Approved
	Pending
	Draft
	Not approved

Library Specification

Library owner no. : 000001
Library owner name : DEIF STANDARD LIB
Product type : XDi 144/192
Performance class : Multi
Library number : 22
Library name : Special Propulsion
Library orientation : Landscape
Library status : Released & Locked
Library version : 2001

Last changed : 22-05-2026 13.12.21

Library default settings :

180 display rotation : False
CAN NodeID : 30

Library notes :

22-05-2026/JHU, Ver. 2001: VI003 and VI004 added with dynamic rudder colour that change to red at negative angle and green at positive angle.

A new VS profile with analogue effective set point added to all VIs.

21-05-2026/JOL, Ver. 2000: First released version of this library with 6 PP's, VI001 and VI002 both with 3 VS profiles.



Product profiles (PP)



Default settings of product and system related parameters, as dimmer and CANbus settings are stored in a product profile.

Timestamp 22-05-2026 13.12.26

PP No.	PP Name	Description	Status	Notes
1	PP01 XDi-net	<p>Dim XDi-net/Front button Dimmer via XDi-net (CAN) and/or via front buttons, Requires option: Front frame with buttons</p> <p>Default settings: XDi-net is active Dimmer group 1 Dimming via XDi-net Auto Day/Night Shift at 70% Monitoring supply voltage 1</p>		CANbus and Dimmer settings can be changed from XDi menu
2	PP02 Analogue	<p>Analogue Dimmer Required: AX1 in Slot 1</p> <p>Dimmer potmeter (+ term 3, - term 1, wiper term 2) Can be reconfigured to voltage input</p> <p>Default settings: Dimmer group 1 Analogue Potmeter 0 to Vref (max. 30V) Auto Day/Night Shift at 70% Shared on XDi-net Monitoring supply voltage 1</p>		An external ref. voltage >7.5V can be connected to Vref out overwriting the internal Vref. From the user menu, you can alternatively reconfigure the analogue dimmer input to a normal voltage input.
3	PP03 CAN	<p>CAN Dimmer CANopen TPDO dimming</p> <p>Default settings: Dimmer group 1 Auto Day/Night Shift at 70% Monitoring supply voltage 1</p>		DEIF default TPDO's are predefined and used in all standard libraries. The default TPDO's for dimmer group control can be changed to any TPDO or RPDO via user menu.
4	PP04 Digital	<p>Digital Dimmer Required: DX1 in Slot 1</p> <p>Digital input 1 up (+term 11,- term 10) Digital input 2 down (+term 8,- term 7)</p> <p>Simultaneous activation of IN1 and IN2 for Day/Night Shift</p> <p>Default settings: Dimmer group 1 Shared on XDi-net Monitoring supply voltage 1</p>		Digital input configuration can be changed from menu.

PP No.	PP Name	Description	Status	Notes
5	PP05 Analogue	<p>Analogue Dimmer Local Required: AX1 in Slot 1</p> <p>Dimmer potmeter (+ term 3, - term 1, wiper term 2) Can be reconfigured to voltage input</p> <p>Default settings: Dimmer group: Local Analogue Potmeter 0 to Vref (max. 30V) Auto Day/Night Shift at 70% (Local - Not shared on XDi-net) Monitoring supply voltage 1</p>		The dimmer group is "Local" and the dimmer input will only affect this unit, dimmer level will not be shared on XDi-net.
6	PP06 Fixed	<p>ECR Fixed Dimmer Dimmer level can be adjusted via front buttons. Option: Front frame with buttons can be used.</p> <p>To extend the backlight life fixed backlight should be below 90%</p> <p>Default settings: XDi-net active Dimmer group: Local Auto Day/Night Shift at 70% Monitoring supply voltage 1</p>		Default fixed dimmer level is reduced to 75% to extend backlight life. Dimmer level and Day/Night colour can be changed from user menu.













Virtual Indicators (VI)




The VI contains the graphical layout of and indicator and defines all data types that are presented on the indicator.

Each VI has at least one VI-setup profile (VS) that defines the input types and default parameter settings.

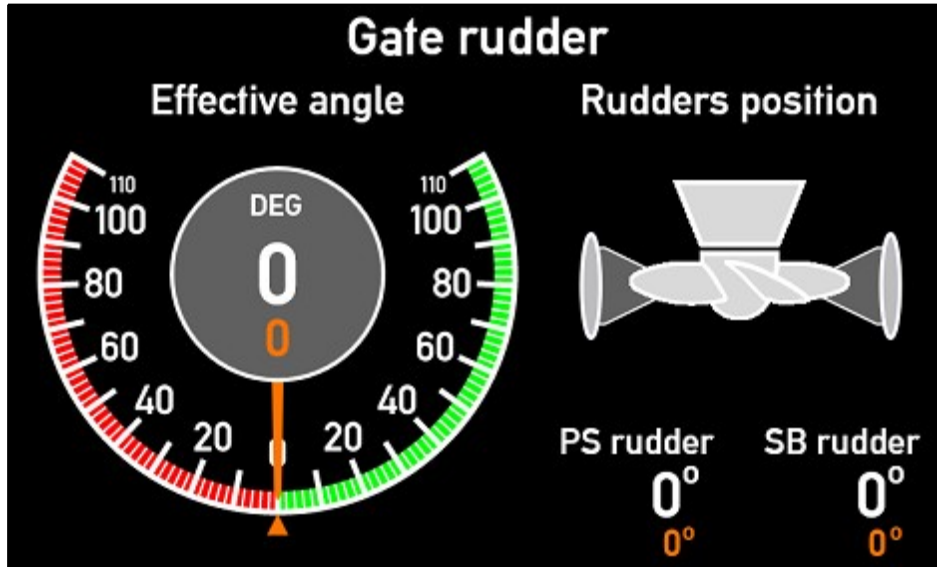
Timestamp 22-05-2026 13.12.26

VI No.	Name	VI-setup profiles (VS)	Approvals	Status
001	Gate Rud \pm 110	4	 	
002	Gate Rud \pm 120	4	 	
003	Gate Rud \pm 110 D	4	 	
004	Gate Rud \pm 120 D	4	 	

 Approvals only apply for XDi 192.

VI 001

Gate Rud ±110



Description : Gate Rudder ±110 Deg

Indicator specially designed for Gate rudder systems.

Status :





VI Notes :


VI-setup profiles (VS) for VI001

VS No.	Name	Description	Status	Notes
1	VS01 XDi-net	<p>XDi-net All data 16 bit signed 0.1 resolution (100=10.0deg)</p> <p>Effective Rudder: 0x3001:02 Eff. Rudder set: 0x3001:07 Port Rudder: 0x3002:02 Port Rudder set: 0x3002:07 Stbd Rudder: 0x3003:02 Stbd Rudder set: 0x3003:07</p>		<p>Setpoint can be disabled (=invisible) via the XDi install menu/ Edit virtual indicator/Indicators and select the setpoint data and turn them OFF. To remove the orange degree-signs (o) enter Text and units/units and set the unit to invisible.</p>

VI-setup profiles (VS) for VI001

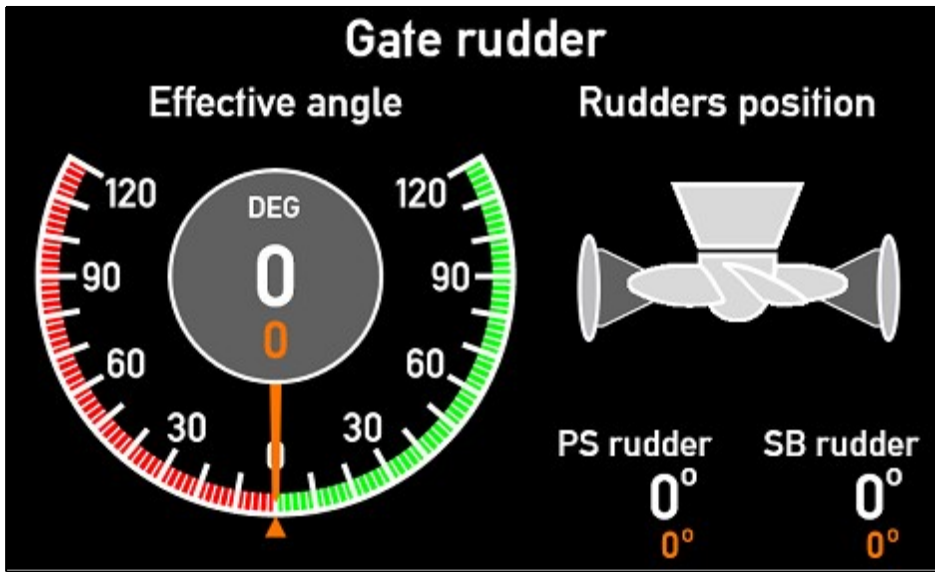
VS No.	Name	Description	Status	Notes
2	VS02 CAN PDO	<p>CAN PDO All data: 16 bit signed 0.1 resolution (100=10.0deg)</p> <p>Rudder data is mapped in TPDO 0x181 Effective Rudder: Byte 0,1 Port Rudder: Byte 2,3 Stbd Rudder: Byte 4,5</p> <p>Set-point data mapped in TPDO 0x281 Eff. Rudder set: Byte 0,1 Port Rudder set: Byte 2,3 Stbd Rudder set: Byte 4,5</p>		<p>CAN TPDO COBID, Mapping and input data scaling can be changed from XDi-menu. Setpoint can be disabled (=invisible) via the XDi install menu/ Edit virtual indicator/Indicators and select the setpoint data and turn them OFF. To remove the orange degree-signs (o) enter Text and units/units and set the unit to invisible.</p>
3	VS03 Analog 1	<p>Analogue and CAN 1 AX1 required in Slot 1 and 2</p> <p>Rudder data 4-12-20mA Inputs scaled to -110.0...0...110.0dg Eff. Rudder: S1HI1 (+trm9,-trm.8) Port Rudder: S2HI1 (+trm9,-trm.8) Stbd Rudder: S2HI2 (+trm5,-trm.4) Input lost below 3.5 mA</p> <p>Set-points are default: OFF Data mapped in TPDO 0x281 16 bit signed, 0.1 resolution Eff. Rudder set: Byte 0,1 (0x3001-07) PS Rudder set: Byte 2,3 (0x3002-07) SB Rudder set: Byte 4,5 (0x3003-07) (XDi-net index)</p>		<p>Analogue input can be changed and calibrated via XDi-menu. Analogue data are shared on XDi-net on CAN1 and2. Setpoint can be enabled via the XDi install menu/ Edit virtual indicator/Indicators and select the setpoint data and turn them ON. To get the orange degree-signs "o" shown, enter menu "Text and Units"/ Units and select the unit "o". CAN TPDO COBID, Mapping and scaling can be changed from XDi install menu / Adjust input. If XDi-net data are used for set-point inputs, please set "CAN conversion mode" to OFF using the Adjust input menu for each set-point data type.</p>

VI-setup profiles (VS) for VI001

VS No.	Name	Description	Status	Notes
4	VS04 Analog 2	<p>Analogue and CAN 2 AX1 required in Slot 1 and 2 Rudder data 4-12-20mA Inputs scaled to -110.0...0...110.0dg Eff. Rudder: S1HI1 (+trm9,-trm.8) Eff. Rudder set: S1HI2 (+trm5,-trm.4) Port Rudder: S2HI1 (+trm9,-trm.8) Stbd Rudder: S2HI2 (+trm5,-trm.4) Input lost below 3.5 mA Set-points PS & SB are default OFF Data mapped in TPDO 0x281 16 bit signed, 0.1 resolution PS Rudder set: Byte 2,3 (0x3002-07) SB Rudder set: Byte 4,5 (0x3003-07) (XDi-net index)</p>		<p>Analogue input can be changed and calibrated via XDi-menu. Analogue data are shared on XDi-net on CAN1 and2. Disabled Setpoint can be enabled via the XDi install menu/ Edit virtual indicator/Indicators and select the setpoint data and turn them ON. To get the orange degree-signs "o" shown, enter menu "Text and Units"/ Units and select the unit "o". CAN TPDO COBID, Mapping and scaling can be changed from XDi install menu / Adjust input. If XDi-net data are used for set-point inputs, please set "CAN conversion mode" to OFF using the Adjust input menu for each set-point data type.</p>

VI 002

Gate Rud ±120




Description : Gate Rudder ±120 Deg

Indicator specially designed for Gate rudder systems.




Status : 

VI Notes :

VI-setup profiles (VS) for VI002

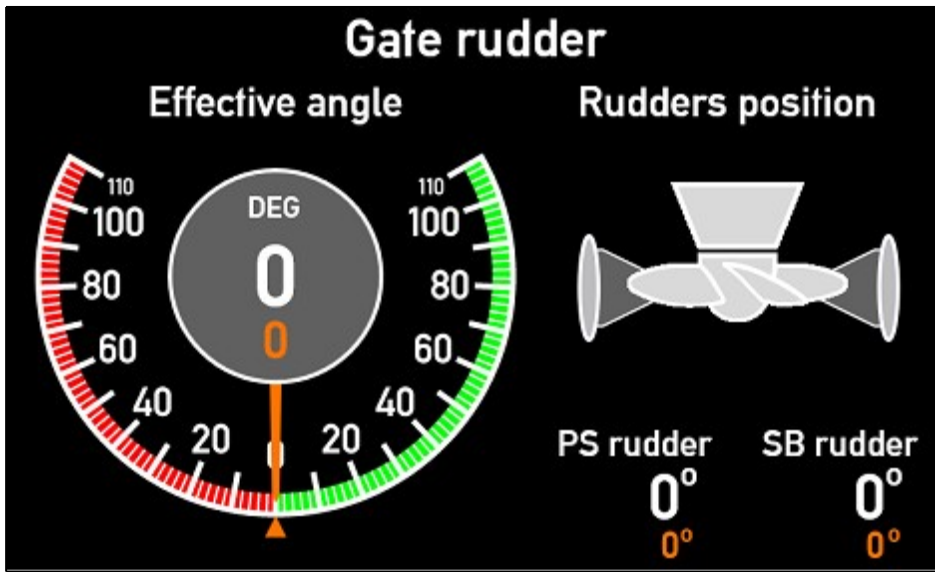
VS No.	Name	Description	Status	Notes
1	VS01 XDi-net	XDi-net Effective Rudder: 0x3001:02 Eff. Rudder set: 0x3001:07 Port Rudder: 0x3002:02 Port Rudder set: 0x3002:07 Stbd Rudder: 0x3003:02 Stbd Rudder set: 0x3003:07		Setpoint can be disabled (=invisible) via the XDi install menu/ Edit virtual indicator/Indicators and select the set-point data and turn them OFF. To remove the orange degree-signs "o" enter Text and Units / Units and set the unit to "Invisible".

VI-setup profiles (VS) for VI002

VS No.	Name	Description	Status	Notes
2	VS02 CAN PDO	<p>CAN PDO All data: 16 bit signed 0.1 resolution (100=10.0deg)</p> <p>Rudder data is mapped in TPDO 0x181 Effective Rudder: Byte 0,1 Port Rudder: Byte 2,3 Stbd Rudder: Byte 4,5</p> <p>Set-point data mapped in TPDO 0x281 Eff. Rudder set: Byte 0,1 Port Rudder set: Byte 2,3 Stbd Rudder set: Byte 4,5</p>		<p>CAN TPDO COBID, Mapping and input data scaling can be changed from XDi-menu. Setpoint can be disabled (=invisible) via the XDi install menu/ Edit virtual indicator/Indicators and select the setpoint data and turn them OFF. To remove the orange degree-signs (o) enter Text and units/units and set the unit to invisible. .</p>
3	VS03 Analog 1	<p>Analogue and CAN 1 AX1 required in Slot 1 and 2</p> <p>Rudder data 4-12-20mA Inputs scaled to -120.0...0...120.0dg Eff. Rudder: S1HI1 (+trm9,-trm.8) Port Rudder: S2HI1 (+trm9,-trm.8) Stbd Rudder: S2HI2 (+trm5,-trm.4) Input lost below 3.5 mA</p> <p>Set-points are default: OFF Data mapped in TPDO 0x281 16 bit signed, 0.1 resolution Eff. Rudder set: Byte 0,1 (0x3001-07) PS Rudder set: Byte 2,3 (0x3002-07) SB Rudder set: Byte 4,5 (0x3003-07) (XDi-net index)</p>		<p>Analogue input can be changed and calibrated via XDi-menu. Analogue data are shared on XDi-net on CAN1 and2. Setpoint can be enabled via the XDi install menu/ Edit virtual indicator/Indicators and select the setpoint data and turn them ON. To get the orange degree-signs "o" shown, enter menu "Text and Units"/ Units and select the unit "o". CAN TPDO COBID, Mapping and scaling can be changed from XDi install menu / Adjust input. If XDi-net data are used for set-point inputs, please set "CAN conversion mode" to OFF using the Adjust input menu for each set-point data type.</p>
4	VS04 Analog 2	<p>Analogue and CAN 2 AX1 required in Slot 1 and 2</p> <p>Rudder data 4-12-20mA Inputs scaled to -110.0...0...110.0dg Eff. Rudder: S1HI1 (+trm9,-trm.8) Eff. Rudder set: S1HI2 (+trm5,-trm.4) Port Rudder: S2HI1 (+trm9,-trm.8) Stbd Rudder: S2HI2 (+trm5,-trm.4) Input lost below 3.5 mA</p> <p>Set-points PS & SB are default OFF Data mapped in TPDO 0x281 16 bit signed, 0.1 resolution PS Rudder set: Byte 2,3 (0x3002-07) SB Rudder set: Byte 4,5 (0x3003-07) (XDi-net index)</p>		

VI 003

Gate Rud ±110 D




Description : Gate Rudder ±110 Deg Dynamic

Indicator specially designed for Gate rudder systems.
Dynamic Red/Green colour for rudders




Status : 

VI Notes :

VI-setup profiles (VS) for VI003

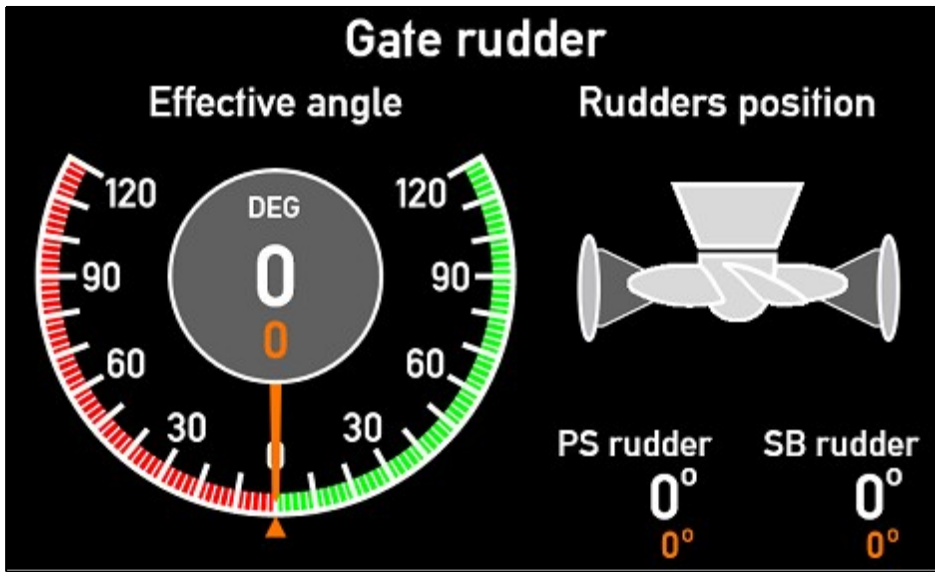
VS No.	Name	Description	Status	Notes
1	VS01 XDi-net	XDi-net All data 16 bit signed 0.1 resolution (100=10.0deg) Effective Rudder: 0x3001:02 Eff. Rudder set: 0x3001:07 Port Rudder: 0x3002:02 Port Rudder set: 0x3002:07 Stbd Rudder: 0x3003:02 Stbd Rudder set: 0x3003:07		

VI-setup profiles (VS) for VI003

VS No.	Name	Description	Status	Notes
2	VS02 CAN PDO	<p>CAN PDO All data: 16 bit signed 0.1 resolution (100=10.0deg)</p> <p>Rudder data is mapped in TPDO 0x181 Effective Rudder: Byte 0,1 Port Rudder: Byte 2,3 Stbd Rudder: Byte 4,5</p> <p>Set-point data mapped in TPDO 0x281 Eff. Rudder set: Byte 0,1 Port Rudder set: Byte 2,3 Stbd Rudder set: Byte 4,5</p>		
3	VS03 Analog 1	<p>Analogue and CAN 1 AX1 required in Slot 1 and 2</p> <p>Rudder data 4-12-20mA Inputs scaled to -110.0...0...110.0dg Eff. Rudder: S1HI1 (+trm9,-trm.8) Port Rudder: S2HI1 (+trm9,-trm.8) Stbd Rudder: S2HI2 (+trm5,-trm.4) Input lost below 3.5 mA</p> <p>Set-points are default: OFF Data mapped in TPDO 0x281 16 bit signed, 0.1 resolution Eff. Rudder set: Byte 0,1 (0x3001-07) PS Rudder set: Byte 2,3 (0x3002-07) SB Rudder set: Byte 4,5 (0x3003-07) (XDi-net index)</p>		
4	VS04 Analog 2	<p>Analogue and CAN 2 AX1 required in Slot 1 and 2</p> <p>Rudder data 4-12-20mA Inputs scaled to -110.0...0...110.0dg Eff. Rudder: S1HI1 (+trm9,-trm.8) Eff. Rudder set: S1HI2 (+trm5,-trm.4) Port Rudder: S2HI1 (+trm9,-trm.8) Stbd Rudder: S2HI2 (+trm5,-trm.4) Input lost below 3.5 mA</p> <p>Set-points PS & SB are default OFF Data mapped in TPDO 0x281 16 bit signed, 0.1 resolution PS Rudder set: Byte 2,3 (0x3002-07) SB Rudder set: Byte 4,5 (0x3003-07) (XDi-net index)</p>		

VI 004

Gate Rud ±120 D





Description : Gate Rudder ±120 Deg Dynamic

Indicator specially designed for Gate rudder systems.
 Dynamic Red/Green colour for rudders


Status : 

VI Notes :

VI-setup profiles (VS) for VI004

VS No.	Name	Description	Status	Notes
1	VS01 XDi-net	XDi-net Effective Rudder: 0x3001:02 Eff. Rudder set: 0x3001:07 Port Rudder: 0x3002:02 Port Rudder set: 0x3002:07 Stbd Rudder: 0x3003:02 Stbd Rudder set: 0x3003:07		
2	VS02 CAN PDO	CAN PDO All data: 16 bit signed 0.1 resolution (100=10.0deg) Rudder data is mapped in TPDO 0x181 Effective Rudder: Byte 0,1 Port Rudder: Byte 2,3 Stbd Rudder: Byte 4,5 Set-point data mapped in TPDO 0x281 Eff. Rudder set: Byte 0,1 Port Rudder set: Byte 2,3 Stbd Rudder set: Byte 4,5		

VI-setup profiles (VS) for VI004

VS No.	Name	Description	Status	Notes
3	VS03 Analog 1	Analogue and CAN 1 AX1 required in Slot 1 and 2 Rudder data 4-12-20mA Inputs scaled to -120.0...0...120.0dg Eff. Rudder: S1HI1 (+trm9,-trm.8) Port Rudder: S2HI1 (+trm9,-trm.8) Stbd Rudder: S2HI2 (+trm5,-trm.4) Input lost below 3.5 mA Set-points are default: OFF Data mapped in TPDO 0x281 16 bit signed, 0.1 resolution Eff. Rudder set: Byte 0,1 (0x3001-07) PS Rudder set: Byte 2,3 (0x3002-07) SB Rudder set: Byte 4,5 (0x3003-07) (XDi-net index)		
4	VS04 Analog 2	Analogue and CAN 2 AX1 required in Slot 1 and 2 Rudder data 4-12-20mA Inputs scaled to -110.0...0...110.0dg Eff. Rudder: S1HI1 (+trm9,-trm.8) Eff. Rudder set: S1HI2 (+trm5,-trm.4) Port Rudder: S2HI1 (+trm9,-trm.8) Stbd Rudder: S2HI2 (+trm5,-trm.4) Input lost below 3.5 mA Set-points PS & SB are default OFF Data mapped in TPDO 0x281 16 bit signed, 0.1 resolution PS Rudder set: Byte 2,3 (0x3002-07) SB Rudder set: Byte 4,5 (0x3003-07) (XDi-net index)	